



Dear << First Name >>

Welcome to the quarterly PSP Learning Hub Newsletter.

In this quarter's PSP Learning Hub newsletter, we have a message from Lila, a Proud Dharawal and Yuin woman, content writer and facilitator here at the PSP Learning Hub. Sector updates include an invitation to have your say about Working with Children Checks, a reminder about the amendments to Practice Note 17, and information about workshops for carers of Aboriginal and Torres Strait Islander children in OOH. In training, we've added even more sessions to the first half of the year, including more face-to-face sessions all over NSW. We hope to see you soon!

A message from Lila Stewart

Proud Dharawal and Yuin woman, facilitator and content writer at the PSP Learning Hub

Welcome to our first newsletter of 2026!

The year is flying. After the (slightly) quieter Christmas and New Year's period, we're excited that our training, coaching, and communities of practice are all back up and running.

I will be facilitating our CoP sessions that focus on Working with Aboriginal Children and Families - a new CoP topic, focused on finding ways to build trusting relationships, understanding and respecting kinship systems, and working alongside Aboriginal children and communities in a culturally safe and trauma-informed way.

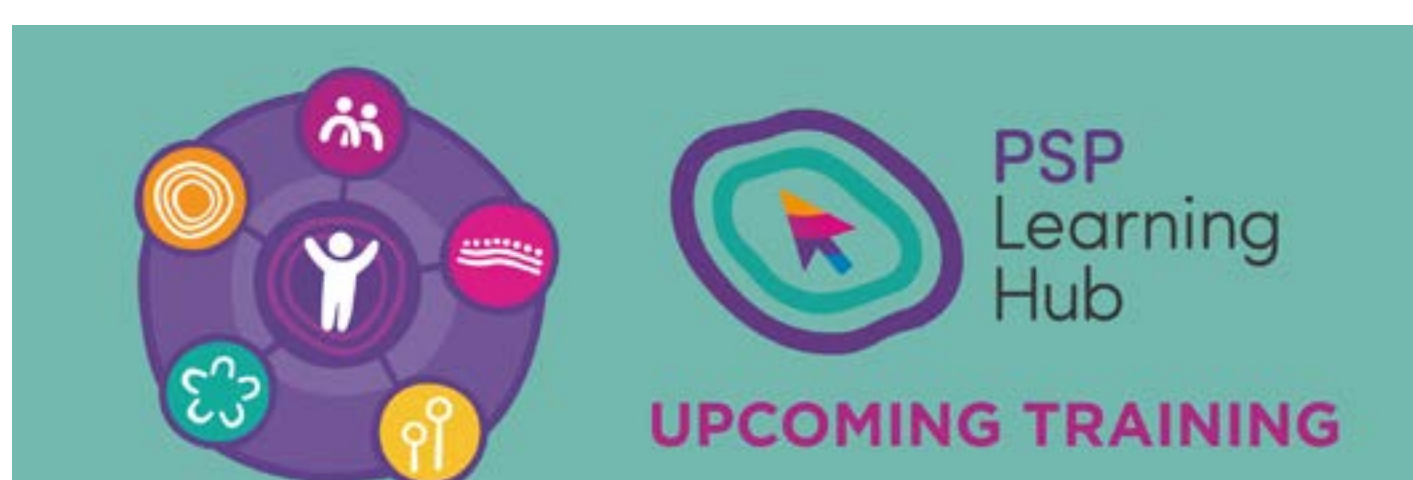


Thank you to everyone for getting on board with our new enrolment system. Unfortunately, it has not been as helpful or easy to use as we had hoped. In line with your feedback, we have decided to return to the previous enrolment system effective immediately.

If you any questions, or issues enrolling, please get in contact with us: PSPlearninghub@curijo.com.au



- **Providing carer assessments, child reports, and reportable conduct matters, during court proceedings:** During Children's Court proceedings, DCJ and PSP providers work together to ensure the Court receives high-quality evidence to inform its decisions. DCJ leads the legal process and is responsible for responding to Court directions and interim orders, while PSP providers contribute critical casework knowledge and support. PSP providers also prepare affidavits and reports on placement, casework and family time, that reflect the child's experience and meets Children's Court standards and timeframes. The current version of the Permanency Case Management Policy (2022) also requires PSP providers share carer assessments, child reports, and reportable conduct matters with the Department (during court proceedings). By working in partnership, we support informed decision-making in the Children's Court. For more information, refer to [Practice Note 17: Designated Agencies in Children's Court Care Proceedings](#) and [PCMP Collaborating in Court Proceedings](#).
- **The Cultural Connections for Carers Workshop:** AbSec Learning and Development Centre would like to share an upcoming workshop designed specifically for carers of Aboriginal and Torres Strait Islander children or young people in out-of-home care. In NSW, all Aboriginal children and young people in out-of-home care must have a Cultural Care Plan and a Cultural Support Plan. The Cultural Connections for Carers Workshop is a one-day interactive session designed to help carers understand and support the cultural needs of Aboriginal children and young people in their care. You will learn practical strategies to work alongside child protection practitioners and other key stakeholders to ensure children maintain, or establish, a strong connection with their culture. For more information, including dates, see the [AbSec LDC page](#).
- **Know Your Rights:** AbSec have now launched their [Know Your Rights](#) website. The website is an accessible resource, built by Aboriginal and Torres Strait Islander families navigating the NSW child protection system, backed by Bringing Them Home research. It provides culturally safe, practical and empowering information to families to help them know their rights.
- **Voices in Action Grants:** Grant applications are now open for young people to attend the 2026 Voices in Action Conference. A limited number of grants are available for young people aged between 10 and 25 with a statutory care experience. [Apply here](#).
- **Closures:** The PSP Learning Hub will be closed on the following days, in line with the Public Holidays:
 - 3rd and 6th of April (Easter Long Weekend)
 - 27th of April (Anzac Day observance)
 - 8th of June (King's Birthday)



We'd love to see you in our upcoming face-to-face training!



- **The Code of Practice:** From 1 October last year, OOH agencies have been assessed under the new Code of Practice. The OCG has put together a short course to help the sector understand the Code, and leaders to understand what assessors will consider when assessing compliance. The course can be found here: [The Code of Practice resources](#). It should be completed with the [Code of Practice Implementation Handbook](#).
- **NSW Out-of-Home Care Strategy:** The Department of Communities and Justice have recently released the [NSW Out-of-Home Care Strategy: A long-term plan to strengthen and transform the out-of-home care program in NSW](#). Further details can be found in the [FAQs](#) and [Fact Sheet - Carers](#)
- **The NSW Accreditation Portal:** The Accreditation Portal is your online hub for managing statutory out-of-home care and adoption accreditation requirements, from updating agency details to lodging essential notifications quickly and securely. Access is available for accredited agencies via the portal. Learn more about the portal and staying compliant here: [About the Accreditation Portal](#).
- **Trauma-informed Practice in community-based mental health course:** The Australian Institute of Family Studies (AIFS) are offering a free, online, self-paced course for practitioners working with children, young people, and families in a community based settings.



We want this newsletter to work for you. Use the QR code to let us know what you would like to see in future newsletters. The survey also includes a section to share your PSP victory. If you've had success in your casework practice, we'd love to hear about it. Fill in the newsletter feedback survey to share your story or valued resource.

