



Welcome

Welcome to the PSP Learning Hub July newsletter. This newsletter brings you updates on our working groups and progress with resource development and shared learning.

Quick links

Restoration Webinars

Our training calendar has webinars for caseworkers and managers on Restoration. Click the [here](#) to view details.

Early Childhood Development Webinars

Over August through to December we are running webinars on the child development theoretical framework and core principles. Click [here](#) to find out more.

Members Registration

Remember to register so that you can enrol in the PSP Learning Hub's training and shared learning events. To register click [here](#).

July Working Group - Culture, Identity and Support

The Culture, Identity and Support Working Group marks our 6th working group since we started in February 2020. Participants included DCJ, peaks and PSP service providers. Service providers represented four districts and included small, medium, and large Aboriginal, CALD and mainstream organisations.

There was strong support on the need for culture and identity to be included in all areas of practice and not siloed as a separate activity. Some of the key areas of need identified by the group included knowledge and skills on:

- culturally affirmative practice
- bringing into focus the child's understanding of identity within their own lived experience
- creating cultural plans that are specific, meaningful and supportive
- pathways for connecting to communities when there are barriers such as language



The working groups scheduled for the remainder of 2020 are Guardianship (August), Preservation (September), Alternative Dispute Resolution (October) and Leaving Care and After Care (November).

Implementation Meetings

In July we attended:

Hunter and Central Coast Districts

- DIG 07/07/20

Murrumbidgee, Far West and Western NSW Districts

- Murrumbidgee Monthly Action Group 28/07/20

Western Sydney and Nepean Blue Mountains District

- Permanency Reform Group 29/07/20



Over the coming quarter we will be at:

Mid North Coast Northern NSW and New England Districts

- DIG 26/08/20

Illawarra Shoalhaven and Southern NSW Districts

- Inter-agency Meeting 12/08/20

South Western Sydney District

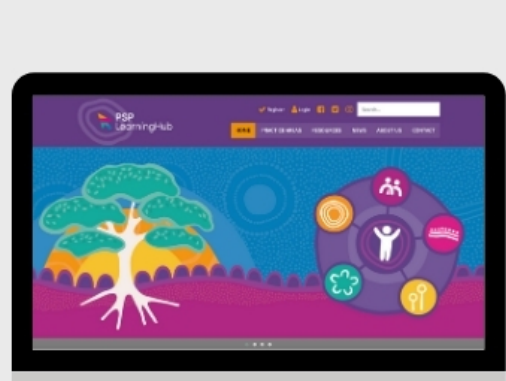
- Permanence Support Subgroup 17/08/20

Here are some stats, we'd love your feedback

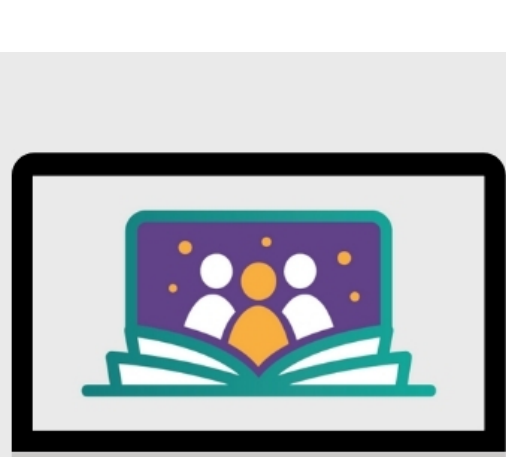
We want your feedback to help us create a learning hub that works for you.

We're holding working groups to get the sector's input on what resources and training are the most beneficial. We'd also like to strengthen our understanding of your information and learning preferences by getting your individual feedback.

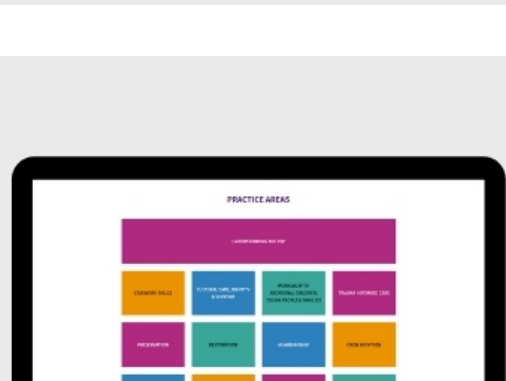
Here's what our analytics show



697 new website users in July, with desktop being the most common viewing device. **Is this how you view the PSP Learning Hub website?**



Webinars are the highest viewed resource type. **What resource type do you want to see more of?**



Understanding the PSP, Casework Skills, and Restoration are the highest viewed practice areas. **Are these the most important to you?**

Give us your feedback



PSP Learning Hub

2/210 Shellharbour Road,

Warrawong, NSW 2502

P: 1300 PSP Hub (1300 777 482)

E: psplearninghub@curijo.com.au

[Subscribe to this newsletter](#)