



Welcome

This newsletter links you with Leaving Care and After Care resources and useful COVID-19 resources.

Quick Links

Leaving Care and After Care Resources for caseworkers

In this time of the COVID-19 check out these allowances in and outside of DCJ to assist with applying for additional resources and allowances in the leaving care plan.

COVID-19 Information and Resources

DCJ has developed specific information for Permanency Support Program (PSP) service providers. The advice includes ITC and residential care providers, across NSW.

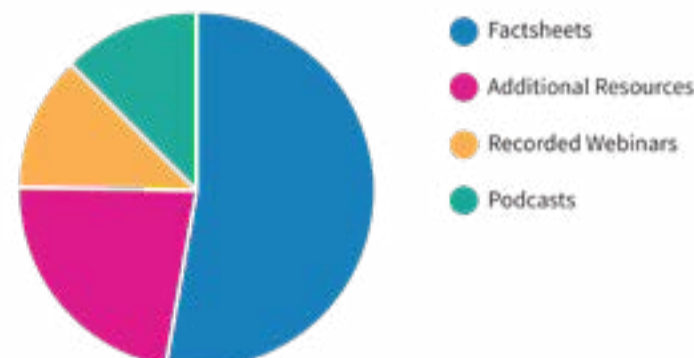
PSP Learning Hub News

We thought you'd like to know what **practice areas** you are accessing the most. Here's the four most top viewed areas. Do you think this matches your most viewed areas?



1. Casework Skills 2. Understanding the PSP 3. Restoration 4. Legal

Our **factsheets** are also the most highly viewed resource type.



Training Updates

Reminder: Remember to Login

Login and check out July's training. Remember to click the calendar icon under **Course Details** to select your preferred date/location. Check out this [video](#) on how to select your training date and time.

Face to Face Training and COVID Restrictions



F2F training in August and September will be delivered online due to the NSW Government current COVID-19 additional restrictions. The following training will move to online delivery for August.

Family Connections and Networks in PSP

- 24/08/2021 (9:30am - 4:30pm) *Online*
- 14/09/2021 (9:30am - 4:30pm) *Online*
- 23/09/2021 (9:30am - 4:30pm) *Online*

Working Effectively in Preservation and Restoration

- 23/08/2021 (9:30am - 4:30pm) *Online [FULL]*
- 24/08/2021 (9:30am - 4:30pm) *Online*
- 01/09/2021 (9:30am - 4:30pm) *Online*
- 07/09/2021 (9:30am - 4:30pm) *Online*
- 15/09/2021 (9:30am - 4:30pm) *Online*

Meaningful and Difficult Conversations in PSP

- 25/08/2021 (9:30am - 4:30pm) *Online*
- 29/09/2021 (9:30am - 4:30pm) *Online*

Permanency in PSP: Guardianship and Adoption

- 30/08/2021 (9:30am - 4:30pm) *Online*

Interactive Webinars



Understanding and Supporting Child Development

- 18/08/2021 (10:00am - 12:00pm)
- 15/09/2021 (1:00pm - 3:00pm)

Crafting Meaningful Worry and Goal Statements

- 02/09/2021 (9:30am - 11:00am)

Resource Updates

This month we have published new resources in Leaving Care and After Care.

Leaving Care and After Care Resources:

Factsheets

Understanding Leaving Care and After Care

- [Foundations of Leaving Care](#)
- [Foundations of After Care](#)

What Guides Leaving Care and After Care

- [Roles and Responsibilities in Leaving Care and After Care](#)
- [Leaving Care Plans](#)
- [Leaving Care Future planning \(infographic\)](#)
- [Legislative and Policy Framework Leaving Care and After Care](#)

Casework skills for Leaving Care and After Care

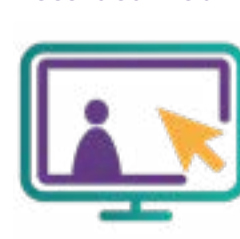
- [Talking To Young People About Leaving Care](#)
- [Establishing Networks](#)

Podcasts



- [The Experience of Leaving Care for Young People](#)

Recorded Webinars



- [A Leaving Care case study](#)

Additional Resources



- [Leaving Care Planning: Practice Tips for Caseworkers](#)
- [Guidelines for the provision of assistance after leaving out-of-home care](#)
- [Independent Living Skills Checklists](#)
- [Go Your Own Way](#)



1300 PSP HUB (1300 777 482)

PSP Learning Hub
2/210 Shellharbour Road,
Warrarong, NSW 2502

P: 1300 PSP Hub (1300 777 482)

E:

Not subscribed? [Sign up here.](#)

Subscribe