



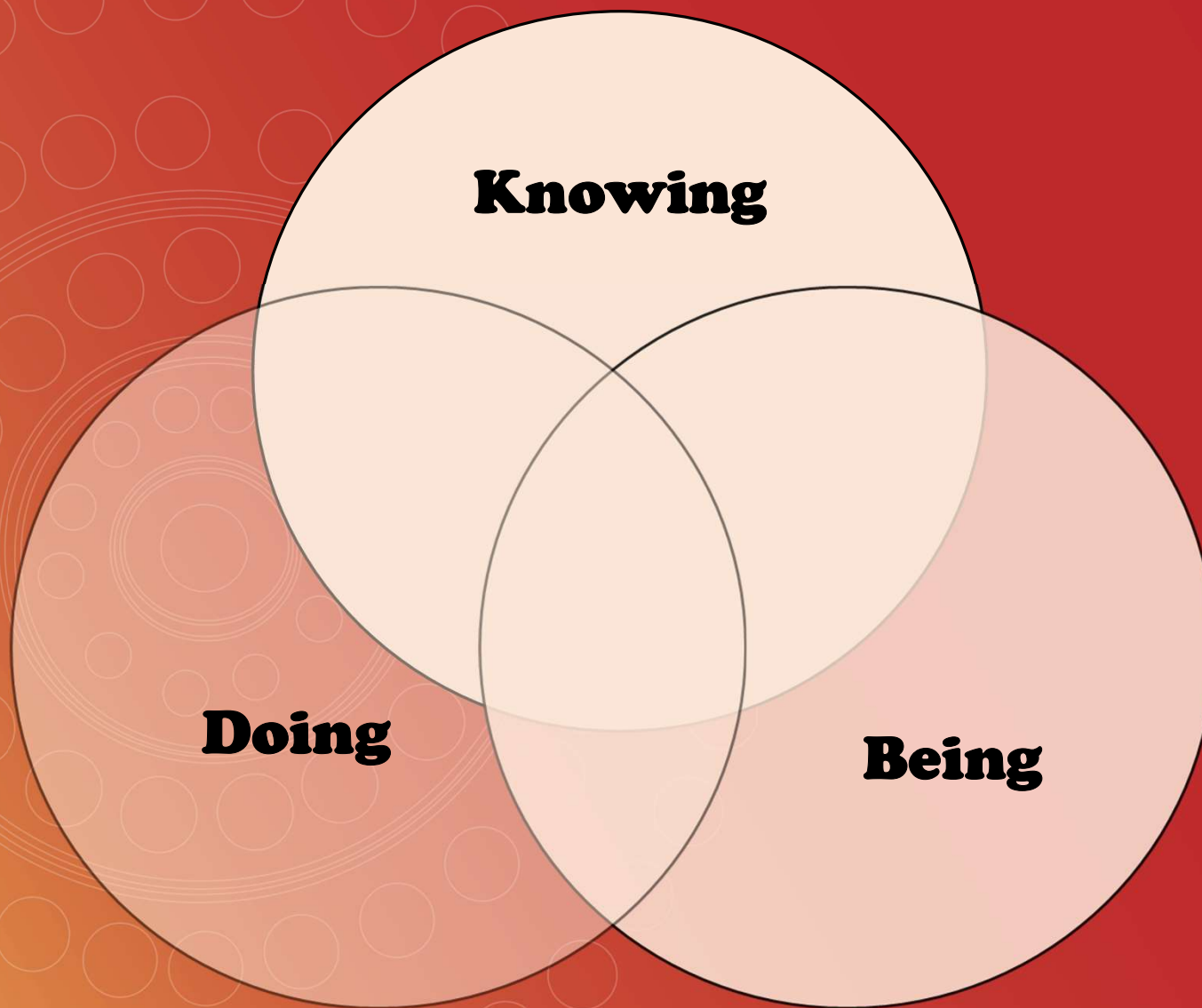
Cultural Capability – Walking the Talk!

Developed & presented by Tina McGhie & Bel Kendall

Acknowledgement of Country



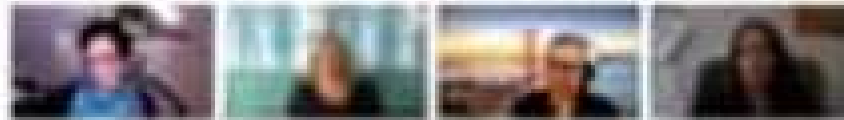
We acknowledge and pay respects to the Traditional Custodians of the lands all are joining from today. We pay respects to Elders past, present and emerging and that all for the sharing of the land. We acknowledge the ongoing and important contributions Aboriginal people make to all communities. We acknowledge members of the Stolen Generations and the children as this is where the culture lives and grows.





**Restoration for a child
recently entering care**

**Restoration for a child who
has been in long term care**



Promoting successful restoration

How do we do this through the dual lenses of working across difference and cultural safety as well as a whole of sector approach?

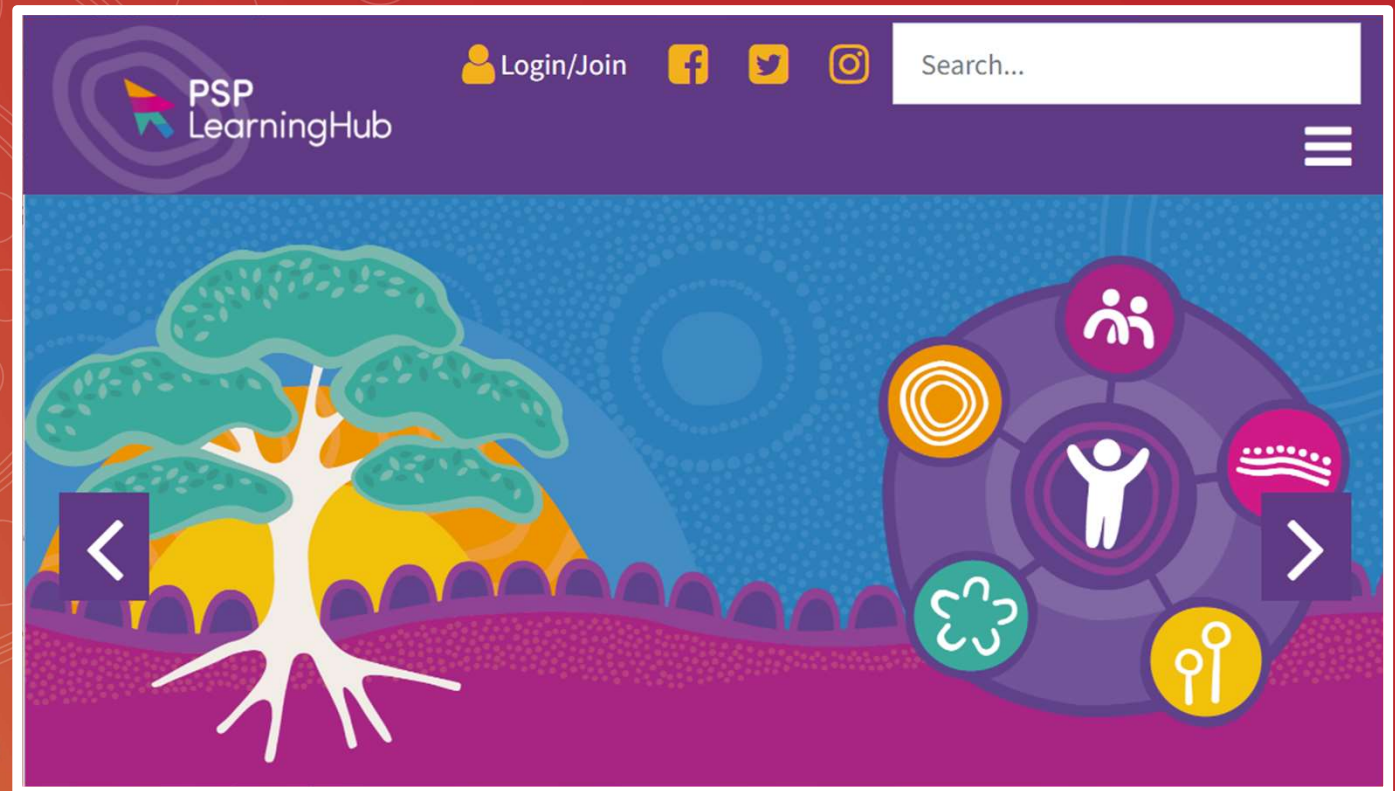


Aboriginal & Torres Strait Islander Principles





Tools & Resources





Thank you