



Exploring the realities of restoration practice with Errin Schumann

An Appreciative Inquiry



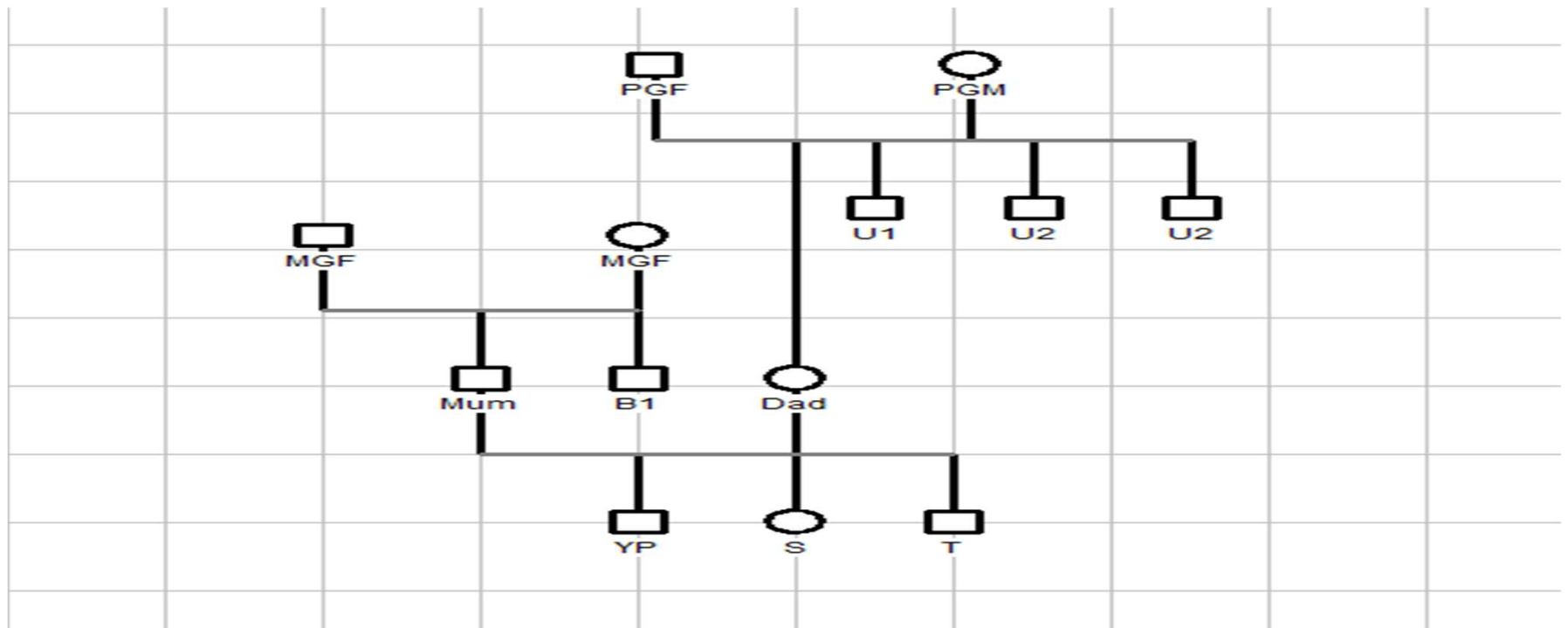


Acknowledgement of Country

Always was.... Always will be....

Genogram of family

Description of Key Strengths and Key Worries



Appreciating the practice journey

1. What was the original approach to relationship building and the impact on restoration progress?
2. How did you shift the relationship with mum and the family?
3. If mum were here today, what would she say were the three most helpful things you did that encouraged capacity building and growth?
4. How did you capture the young person's voice in the relationship work?
5. If the young person were here today, what would he say was the one most helpful thing you did that encouraged relationship with him?
6. What impact did all this skilful work have the restoration outcome?



Key take aways

Humanize the families we work with

Seek permission early in the relationship to lean into all types of conversation

Empower parent's independence – take assumption out of our work about capacity

Build capacity that encourages informed choice in behaviour change work

Relationship repair work between parent – child, parent – worker, parent – network, if required

Building the family's network from day one for long term support through natural relationships

Word Cloud Activity



Provide two words that describe what you most appreciate about the practice you have heard about?

How to participate:

1. Go to [menti.com](https://www.menti.com)
2. Enter the code: 5989 8376
3. Enter words and submit. You may save the word cloud after submitting.

OR scan the QR code:

The Word Cloud will be shared shortly & these instructions will be placed in the chat.